

# Technology of Free Energy Multiplier

edited by A. Schneider, Jan. 14, 2018

Updated, Jan. 15, 2018

Updated, Jan. 20, 2018

Updated, Jan. 22, 2018

Updated Febr. 17, 2018

Updated Febr. 19, 2018

Updated Nov. 17, 2018

It seems that **the first who had the idea to pick up energy from the surroundings resp. from the universally available «ether» was Nikola Tesla**. As I summarized in the slides at the end of this paper **he referred** in several of his interviews, publications and patents **that such a cosmic energy source really exists**.

Several **other inventors** resp. « Tesla followers » have tried and sometimes **succeeded to build systems including a storage device** like a battery which allows to **produce continually electrical energy**.

There **exist also theoretical papers** to the possibility to **convert energy from the vacuum field** like that of Tom Bearden, Lawrence Tesung, Prof. Claus Turtur et.al.

## Links to practical implementations :

**0. Carlos F. Benitez**      <http://www.borderlands.de/Links/GB121561A.pdf>

**The inventor**, a civil engineer of Guadalajara, Mexico, **invented a method to produce electrical energy by charging and discharging batteries alternatively**. The discharging battery is connected to a load and delivers a part of the energy to **an oscillatory circuit provided with a rectifier** which **sends the high frequency pulses through the second battery** from the positive to the negative pole. It was found that this **second battery can be charged** in this manner **completely in the time lapse of time in which the first battery discharges**. Therefore it is only a **question of reversion the connections** of said batteries from time to time and to repeat the procedure. A method to realize this switching is **described in GB121,561** which was completely accepted on Dec 24, 1918. In his base patent application 14,311, see : <http://potentialtec.com/GB191514311A.pdf> , it is claimed :

N<sup>o</sup> 14,311.—A.D. 1915.

7

---

### *System for the Generation of Electric Currents.*

---

1. Disposed in combination: One or more batteries of accumulators already charged by proper means, and connected in series; a second battery or batteries of accumulators connected in parallel, series parallel, or in any other manner producing an inferior voltage to that obtained in the first battery or batteries;

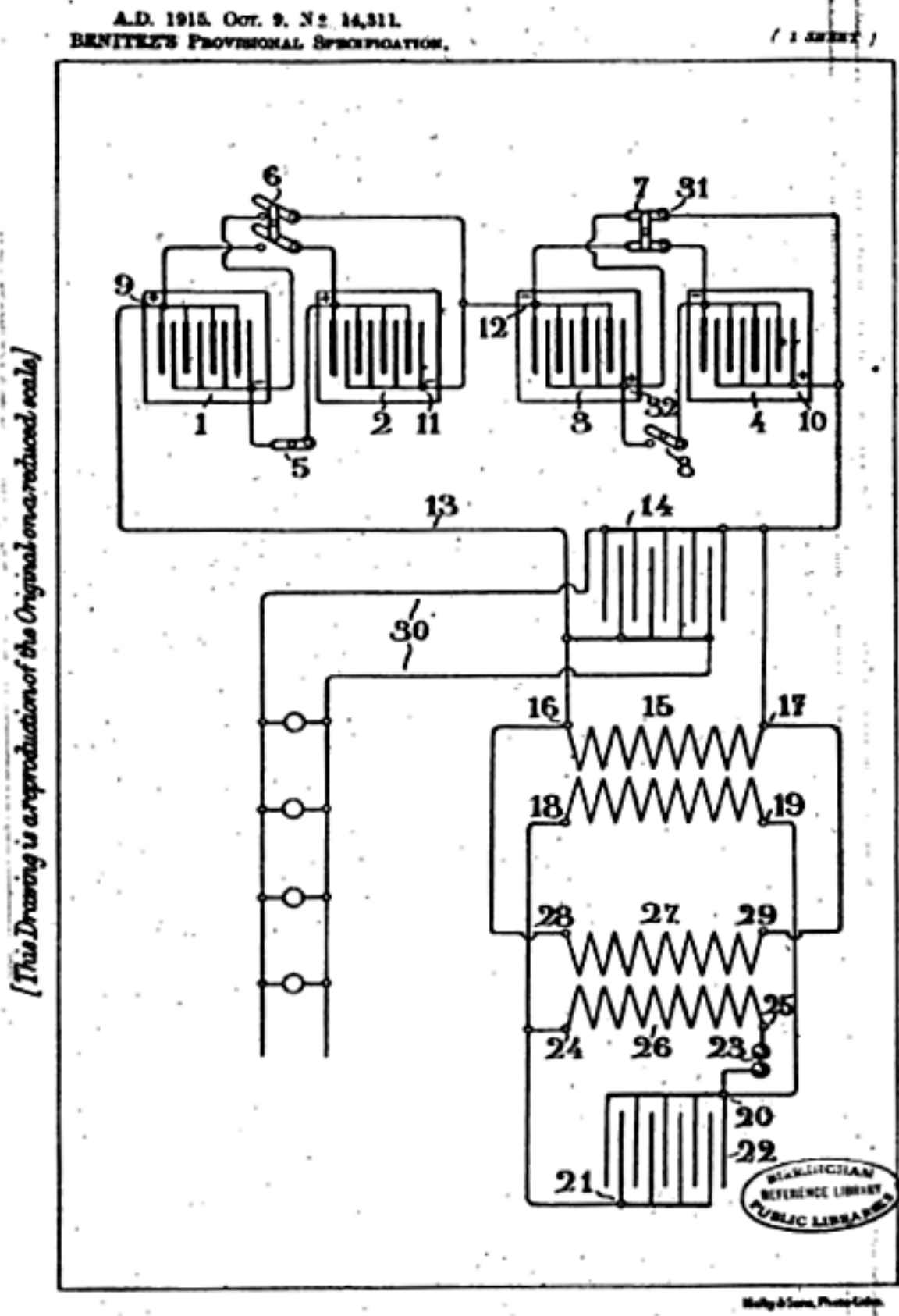
5 both said batteries arranged in such a way as to utilise the discharge of the accumulators connected in series for the charging of the second battery or batteries; means for generating high frequency currents through the circuit connecting both batteries of accumulators, in order to increase the energy of the discharges of said batteries, and for utilising part of this energy thus

10 increased in any outside purpose; and means for reversing from time to time the respective connections of such batteries; all substantially as herein described and for the specified objects.

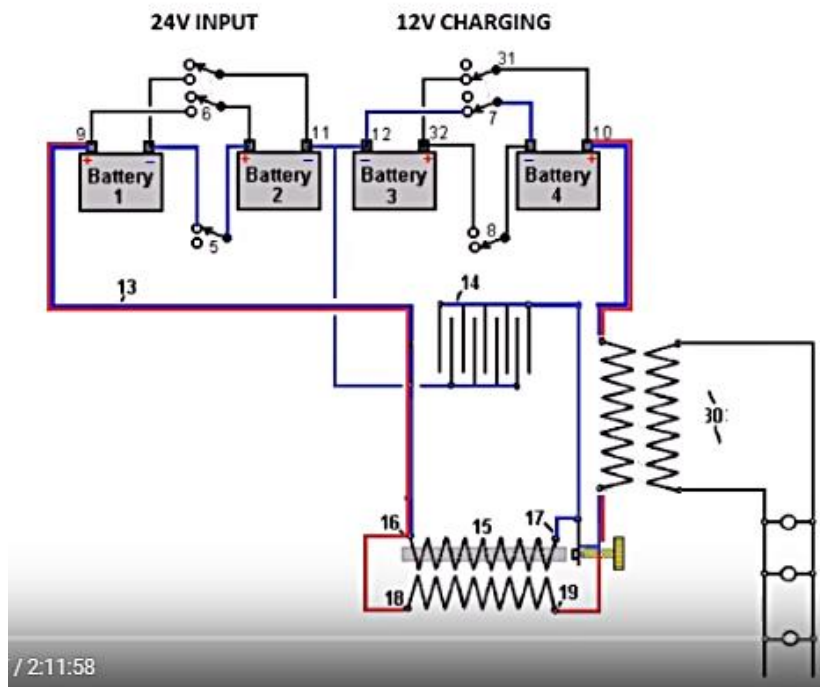
2. Disposed in combination: Mechanisms or apparatus arranged, connected and operating substantially in the manner described, in connection with the

15 appended drawings and for the purposes shown.

The basic circuit as printed in the patent application No 14,311 (GB) is reproduced here :



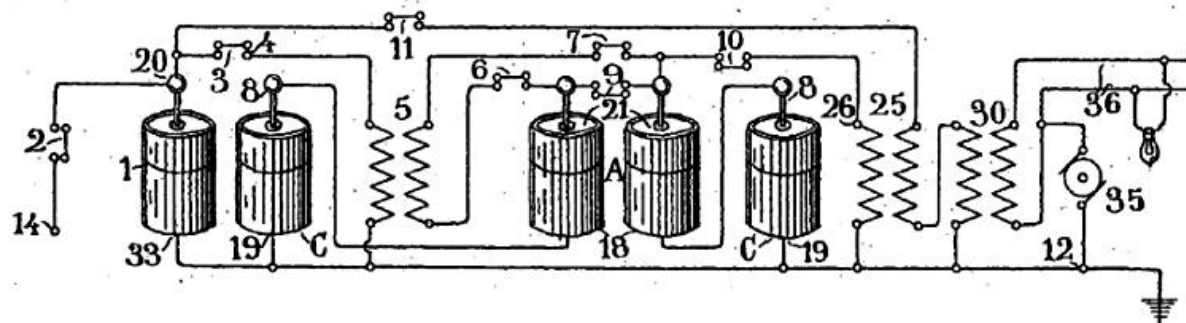
[https://www.youtube.com/watch?time\\_continue=12&v=q1FyajzU3So](https://www.youtube.com/watch?time_continue=12&v=q1FyajzU3So) 8 :17 (2.11 :58)



Rick Friedrich explains in this video how the invention of Carlos F. Benitez really worked. Two serially connected batteries 1+2 with together 24 V are fed via some loads to two parallelly connected batteries 3+4 (12 V) which are charged at the same time by the flowing current. After some time the charging and loading batteries are interchanged so that battery 3+4 are serially connected and batteries 1+2 are parallelly connected. And the current is flowing

now from battery 3+4 (24 V) via the load to battery 1+2 (12 V). **Important is the oscillatory circuit (below) which allows a faster and more effective charging of the batteries.**

Originally Carlos F. Benitez used capacitors instead of batteries, see at time 34 :50 in the link given above.

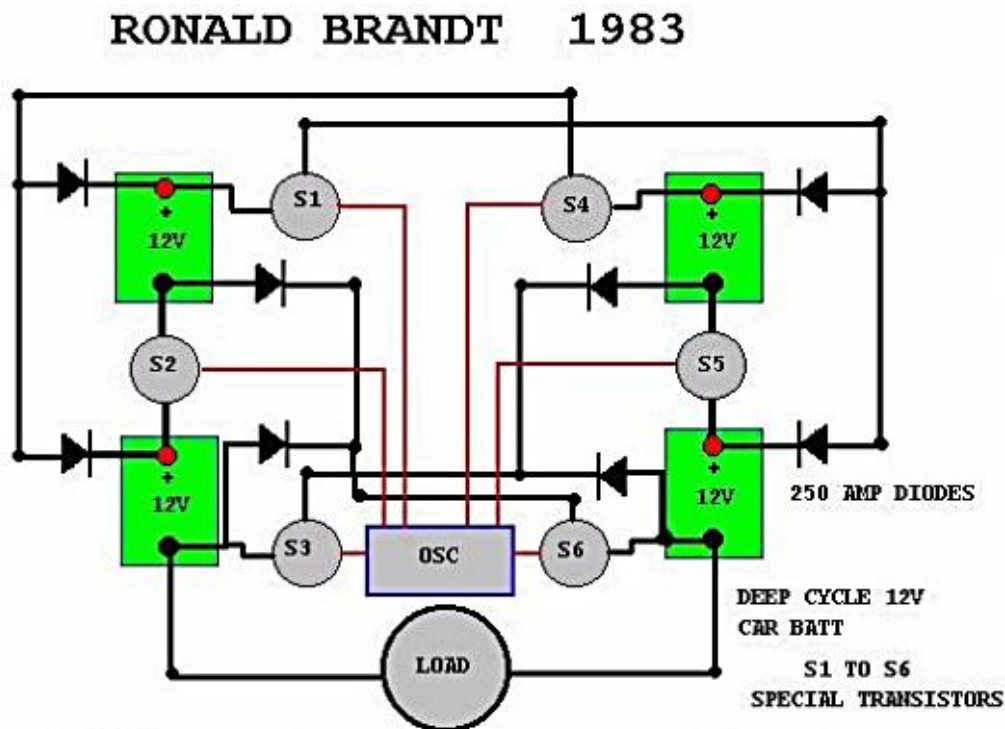


Also in this configuration **the inventor emphasizes the need of an oscillatory circuit** composed by a condensor, coils and a breaker. **Evidently in this way it is possible to use resonance energy for recharging the parallelly connected right batteries** from the serially connected two left batteries **completely and to use some remaining additional energy for external loads** (lamps connected to line 36, see on the right). **This load is transformed** via transformer windings to left part (noted with 5) **as a serial load to the left condenser.**

**Much more can be learned by consulting the different videos of Rich Friedrich** which can be seen on the link mentioned above.

## 1. Ronald Brandt/Bedini converter

<https://www.greenoptimistic.com/john-bedinis-cigar-box-sized-tesla-switch-how-to-build-it-20080206/#.Wlm2za7iaM9>

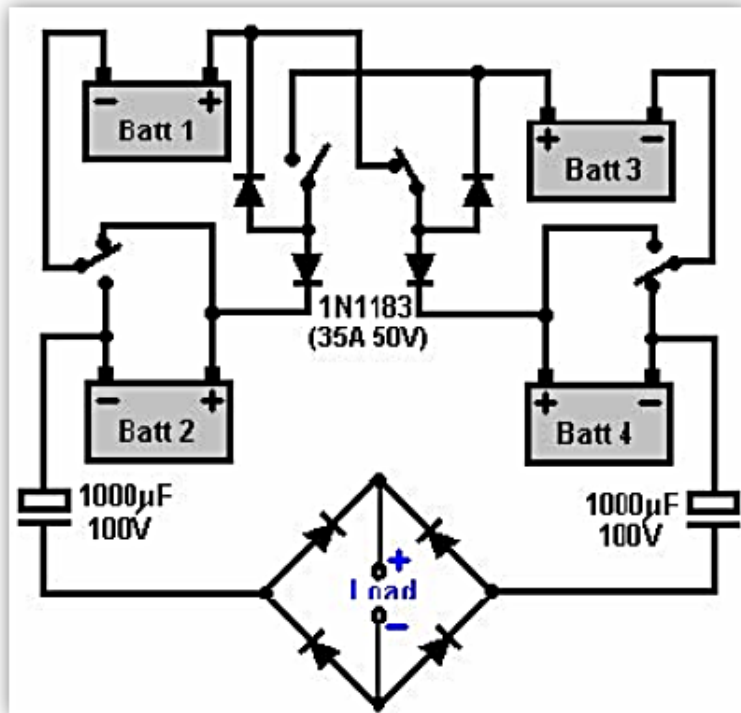


This is the Ron Brandt converter, the way I received it from Ron in late 1983. Ron had this in a car which he drove all over town and on the highway at speeds up to 60 MPH. Tesla could have had the same type Converter

At the Tesla Centennial Symposium in Colorado Springs, CO, on August, 11, 1984, John Bedini demonstrated an inexpensive, cigar-box sized Tesla-type converter which he had recently built. Throughout the demonstration, which lasted a full 24 hours during the symposium, a constant load was being drawn out of the system to do work. Nevertheless, the converter kept the nickel-cadmium batteries fully charged!

The concept, which had been originated by Nikola Tesla, **was given to John Bedini by Ronald Brandt, who was a personal friend of Nikola Tesla.** Brandt is reputed to have a similar converter which he has used for years without losing the battery charge. Bedini presented the schematic diagram showing how to build the solid-state device, and then released copies of the schematic diagram.

[https://www.greenoptimistic.com/build-tesla-4-battery-switch#.Wlm3\\_a7iaM9](https://www.greenoptimistic.com/build-tesla-4-battery-switch#.Wlm3_a7iaM9)



**Tesla used the fact that lead ions are heavier than electrons.** Every circuit, in its transitory phase (from zero-volt to x volts) develops a much higher voltage applied on the negative side. This voltage (pile-up of electrons meeting the much heavier lead ions) is then normally distributed in the circuit. **If you cut off the load and the source battery, all the voltage made by the electrons gathered at the negative side of the battery you want to charge, go in that battery. If you do that from 200 to 800 times per second, you can charge the**

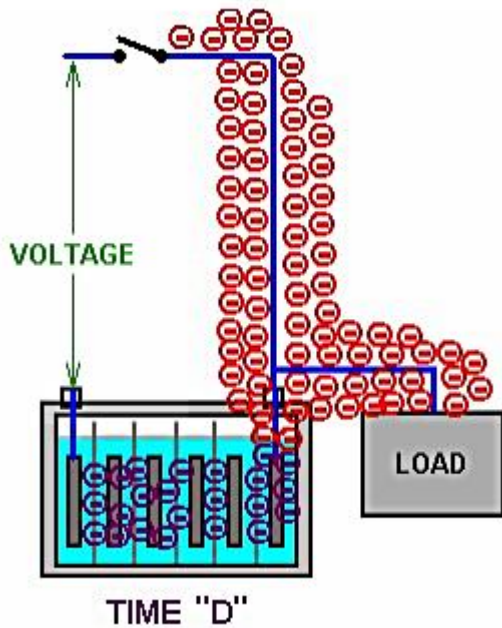
**destination battery (lead-acid) in a very short time (tens of minutes). By switching the batteries between them, you restart the process and reload the source battery.**

**Remark : According to Rick Friedrich it was found that such fast switching stresses the plates in the batteries to much which can result in batteries break down.**

There is a company (**Electrodyne Corporation**) who **tested this ensemblment** and **for three years** they fueled many devices, **with no unusual damage to the batteries.** According to the link : <http://www.free-energy-info.co.uk/Chapt6.html> Here you can read:

...**The Electrodyne Corp.** staff who experimented extensively with the Tesla Switch circuitry, **found that when a battery was fully conditioned to used cold electricity, that a battery could be disconnected, discharged independently to its full capacity, and then re-charged completely in under one minute.**

That style of operation completely overcomes the objections to using battery banks to power household equipment of any power.... This phenomenon is explained in more detail at the link: <http://www.free-energy-info.com/Batteries.pdf>



THIS HAS THE SAME EFFECT AS IF A MUCH HIGHER VOLTAGE SOURCE HAD BEEN CONNECTED TO THE BATTERY, CAUSING A MUCH GREATER RATE OF CHARGING. EFFECT ONLY LASTS FOR A FRACTION OF A SECOND, AND IF YOU ARE USING A DC CHARGING SOURCE, IT ONLY OCCURS ONCE DURING THE CHARGING SESSION.

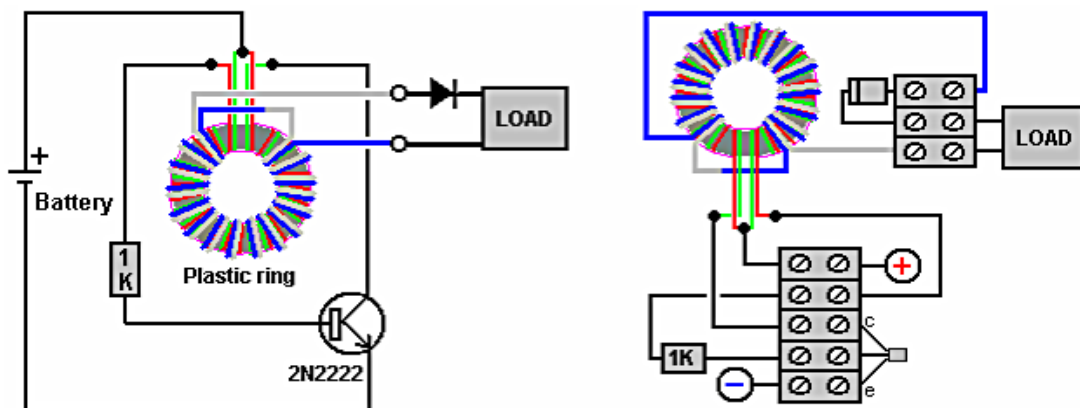
However, IF WE CHOOSE, **WE CAN ARRANGE OUR CHARGING CIRCUIT TO DO THIS SWITCH-ON STYLE OF CHARGING THOUSANDS OF TIMES EACH SECOND.**

FOR EXAMPLE, **LAWRENCE TSEUNG PRODUCED A CHARGING SYSTEM WHICH IS A MODIFIED JOULE THIEF CIRCUIT AND HE STATES THAT IT IS TEN TIMES MORE EFFECTIVE THAN ORDINARY CHARGING,**

see : <http://www.free-energy-info.com/FLEET.pdf>

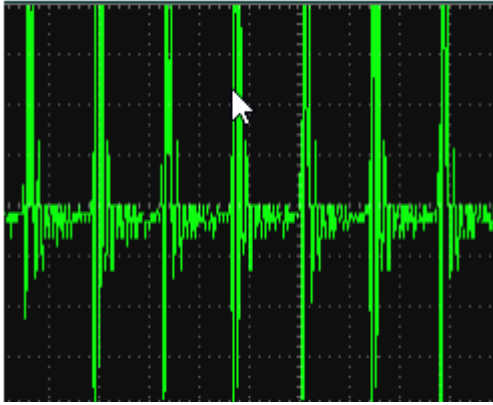
THE CIRCUIT IS CALLED THE F.L.E.E.T. DEVICE WHERE F.L.E.E.T. STANDS FOR THE “FOREVER LEAD-OUT EXISTING ENERGY TRANSFORMER” EMPHASISING THAT **THE EXTRA ENERGY HAS NOT BEEN CREATED BUT INSTEAD HAS JUST BEEN DRAWN INTO THE CIRCUIT FROM THE ENVIRONMENT WHERE IT ALREADY EXISTED.**

**THE OVERALL CIRCUIT LOOKS LIKE THIS :**

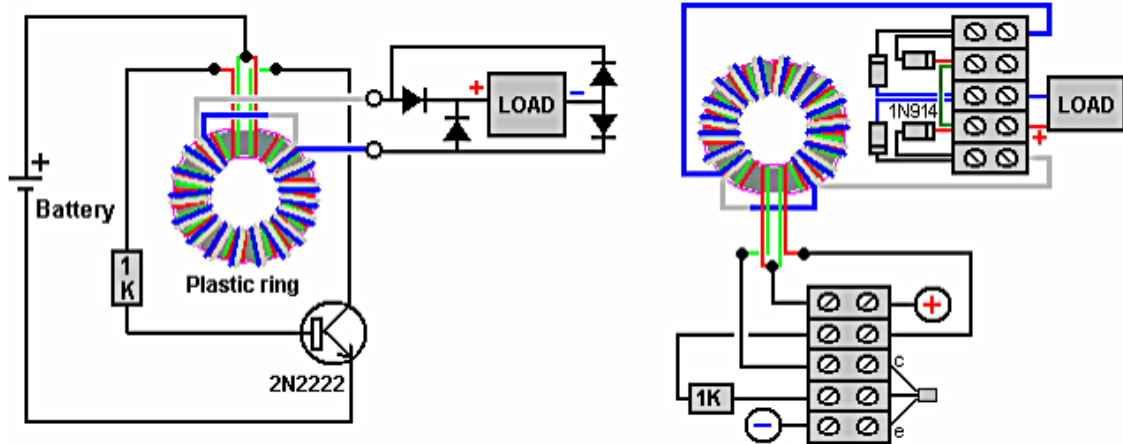


WHILE THE OUTER WINDING IS SHOWN HERE WITH THICKER WIRE OF A DIFFERENT COLOUR, THIS IS ONLY TO MAKE THE DRAWING EASIER TO UNDERSTAND. IN REALITY, THE **OUTER WINDING IS MADE WITH EXACTLY THE SAME WIRE AS THE INNER WINDING.** BOTH WINDINGS GO ALL OF THE WAY AROUND THE TOROID.

**TOTAL AMOUNT OF WIRE NEEDED TO MAKE THE WINDINGS IS ABOUT 70 METRES AND SO IT IS NORMAL TO BUY A 100-METRE REEL OF THE TWIN-CORE WIRE AS THAT IS ENOUGH TO MAKE BOTH WINDINGS AND STILL HAVE SOME OVER FOR OTHER THINGS.**



TECHNICALLY MINDED PEOPLE, THE OUTPUT WAVEFORM LOOKS LIKE THIS : AND THERE ARE **ABOUT 290,000 OF THOSE PULSES PER SECOND**. AT AN EARLY STAGE, I DECIDED TO CONFIRM THAT FREE ENERGY EXISTED, AND SO I BUILT A FLEET CIRCUIT IN AN EVENING. I DECIDED TO USE TWO SMALL 12-VOLT LEAD-ACID BATTERIES FOR THE TEST AND I CHOSE TO USE FOUR DIODES IN A BRIDGE RATHER THAN JUST A SINGLE DIODE.



**I CHOSE TO USE TWO BATTERIES** AND STAY AWAY FROM ANY FORM OF MAINS INPUT SO THAT IT WOULD BE VERY CLEAR THAT NO CONVENTIONAL FORM OF ADDITIONAL POWER COULD UPSET THE RESULTS.

SO, I USED FLEET CIRCUIT POWERED BY ONE BATTERY TO CHARGE THE THE SECOND BATTERY. THEN I SWAPPED THE BATTERIES OVER AND USED THE SECOND BATTERY TO CHARGE THE FIRST. I DID THIS A COUPLE OF TIMES AND LET THE BATTERIES REST SO AS TO GET A RELIABLE READING FROM THEM. **THE RESULT WAS A GENUINE GAIN OF REAL, USABLE POWER IN BOTH BATTERIES.**

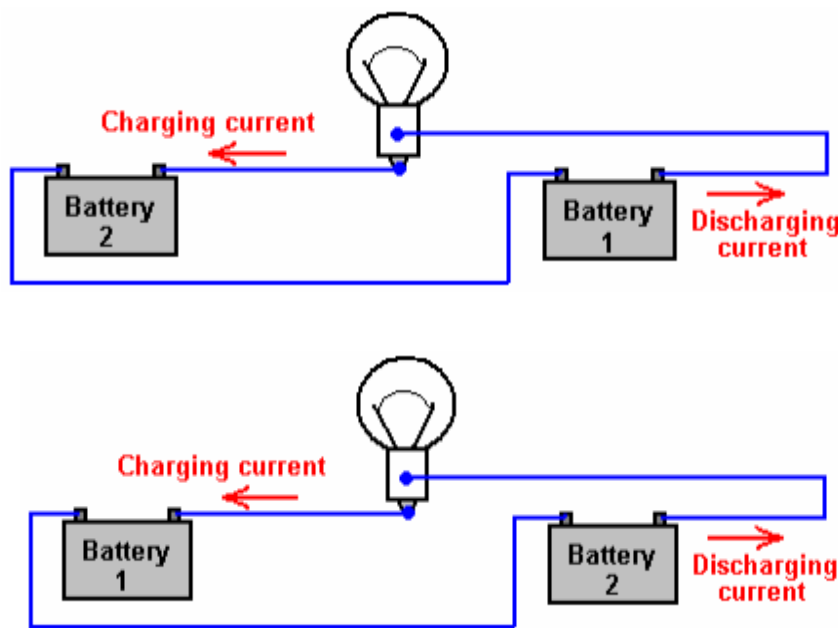
I CONSIDERED THAT RESULT TO SHOW THAT **FREE-ENERGY IS MOST DEFINITELY A FACT**, ESPECIALLY SINCE LEAD-ACID BATTERIES WASTE 50% OF ALL OF THE POWER THAT YOU FEED INTO THEM WHEN CHARGING THEM, SO **MY TEST HAD A CIRCUIT PERFORMANCE GREATER THAN COP=2.**

THE EFFICIENCY OF THAT TEST WOULD PROBABLY HAVE BEEN VERY MUCH HIGHER IF I HAD CHARGED TWO OR MORE BATTERIES CONNECTED IN SERIES. **THE COIL USED WAS WOUND ON A PLASTIC PIPE OFFCUT WHICH WAS TO HAND AT THE TIME. IT WAS 8 INCHES IN DIAMETER (200mm) AND 10mm X 12mm IN CROSS-SECTION AND THE WIRE WAS SINGLESTRAND 6-AMP CAPACITY EQUIPMENT WIRE WHICH WAS AVAILABLE AT THE TIME.**

## 2. Tesla 4-battery system, Bedini 3-battery system, Ron Cole's 1-battery system

[http://www.vems.hu/freenenergy/pajert62/Tesla Battery Switch 2.PGFED.pdf](http://www.vems.hu/freenenergy/pajert62/Tesla_Battery_Switch_2.PGFED.pdf)

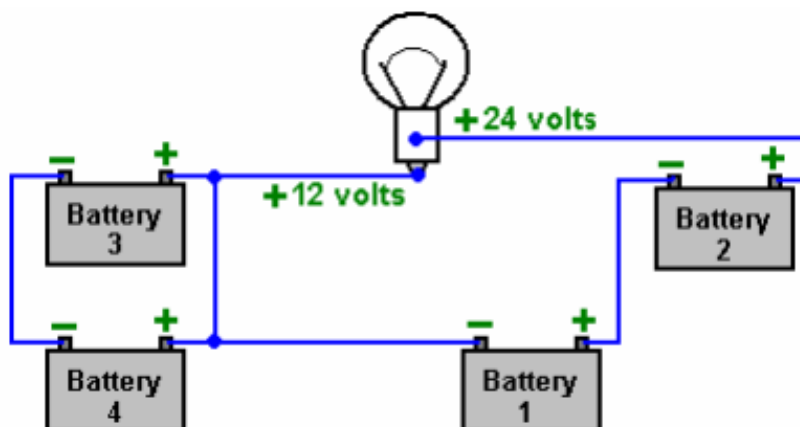
The current flowing through the bulb can be arranged to be a charging current for another battery. It can **both light the bulb and charge another battery without needing any extra current**: Here, the circuit is powered by battery 1 as before, but this time the current goes on to charge battery 2.



Yes, battery 1 gets discharged just as before, but the plus side is that battery 2 is getting charged up all the time. **The final step is to swap the batteries over:**

And now, the newly charged battery 2 lights the bulb and charges up battery 1 again. Seem impossible? Well it isn't.

Nikola Tesla demonstrates this with his “4-battery switch” system where he chooses to use four identical batteries to implement this circuit:



With 12-volt batteries as shown here, the bulb has the same 12 volts across it as it would have had with the single battery shown in the first diagram, as **batteries 1 and 2 are wired “in series”** to give 24 volts, while **batteries 3 and 4 are wired “in parallel”** to give 12 volts.

**Nikola Tesla** arranged his circuit to swap the batteries over with 1 and 2 taking the place of 3 and 4. He chose to do it in a slightly different way and **he swapped the batteries over hundreds of times per second.**



### **The Weird stuff:**

There is another important factor involved in battery-charging circuits to be used with normal lead-acid batteries and that is the practical detail of the materials involved.

The charging process in this switching circuit is carried out by electrons flowing down the connecting wire and into the battery. **The electrons flowing** along the outer surface of the wire, **move very rapidly indeed.**

**The main current inside the battery is carried by the charged ions inside the lead plates** inside the battery. **These ions are hundreds of thousands of times heavier than the electrons.** This doesn't matter at all once the ions get moving, but **in the initial split second before the ions get going,** the incoming **electrons pile up like in a traffic jam tail-back.**

This pile-up of electrons **pushes up the voltage on the terminal of the battery, well above the nominal battery voltage,** and so the charging starts off with a high-voltage, high-current pulse into the battery.

**This is not normally noticed when using a standard mains-powered battery charger,** as switch-on only occurs once during the whole charging process.

**In the Tesla switch shown here, and in the Bedini circuits shown earlier, this is not the case.** The circuit takes advantage of this difference in momentum between the electrons and the lead ions, and uses it repeatedly to great advantage.

**The technique is to use very short duration pulses all the time.** If the pulses are short enough, **the voltage and current drive into the receiving battery is far greater than a quick glance at the circuit would suggest.** This is not magic, just common-sense characteristics of the materials being used in this circuit.

A person unfamiliar with these systems, seeing John Bedini's many advanced circuits for the first time, might get the impression that they are just crude, roughly-built circuits. Nothing could be further from the truth. **John often uses mechanical switching because it gives very sharp switch-on and switch-off times.** John is a complete master of this circuitry and knows exactly what he is doing.

**The Electrodyne Corporation tested the Tesla 4-battery circuit over a period of three years.**

They found that **at the end of that period, the batteries did not show any unusual deterioration.** The batteries used were **ordinary lead acid batteries.**

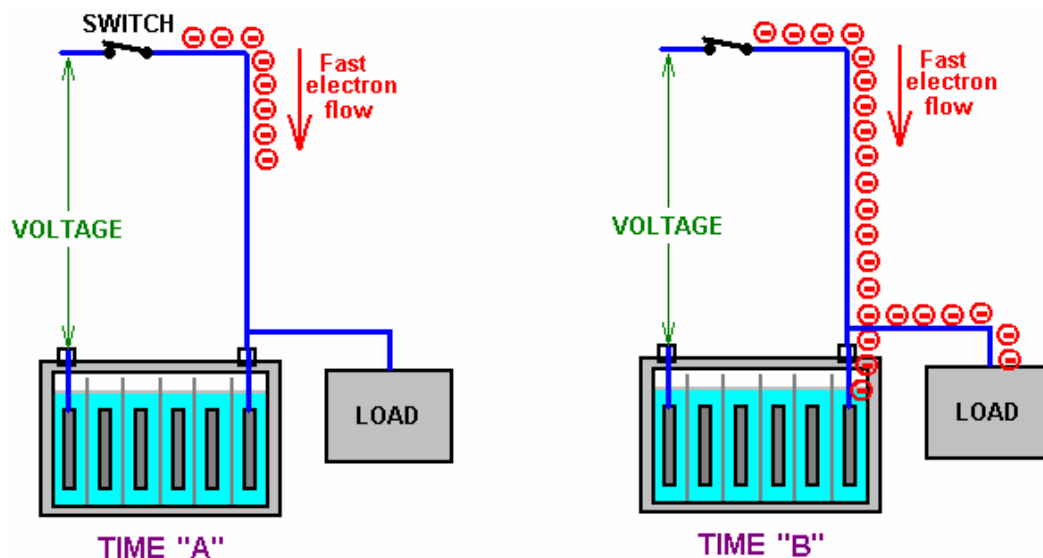
The system operated lights, heaters, television sets, small motors and a 30-horsepower electric motor.

If the batteries were run down to a low level and then the circuit switch on with a load, **the recharging of the batteries took place in under one minute.**

**No heating was experienced during this rapid charging.** Heat was only produced during discharge cycles. If left undisturbed, each battery would charge up to nearly 36 volts. **Control circuitry was developed to prevent this over-charging.**

They used **mechanical switching** and stated that **below 100 Hz there was not much advantage** with the circuit and **above 800 Hz it could be dangerous.**

They didn't mention why they consider that higher rates of switching could be dangerous. If we consider what exactly is happening, perhaps we can work out why they said that. The charging situation is like this



**At Time "A" the switch closes, connecting** a voltage source (battery, charged capacitor, or whatever) to a lead-acid battery. **Electrons** start flowing down the outside of the connecting wire.

Being very light and having little obstruction, they **move very fast** indeed (the electrons inside the wire only move a few inches per hour as getting through the wire is difficult).

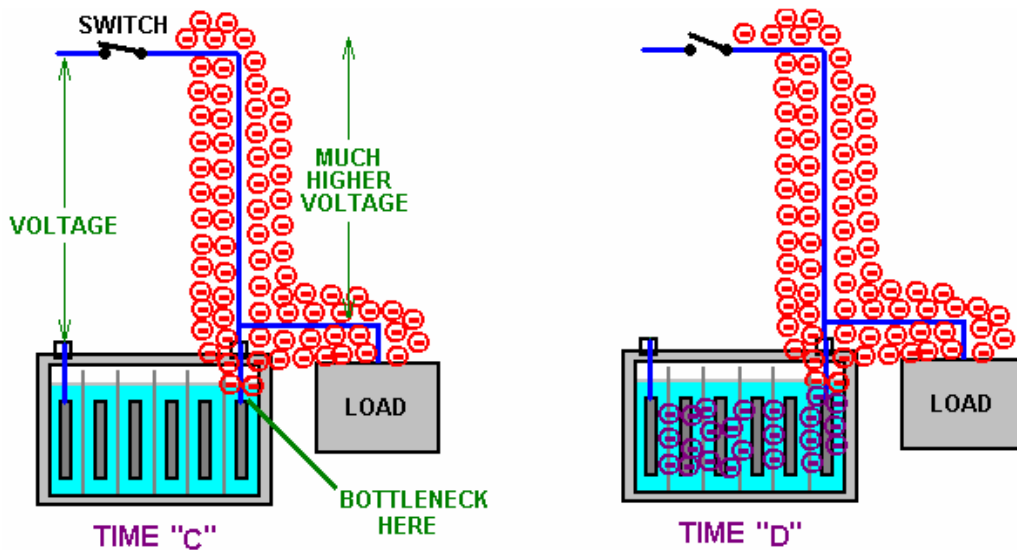
**All goes well until Time "B" when the leading electrons reach the lead plates inside the battery.** Here, they have a problem, because the current flow through the plates is carried by lead ions.

**Lead ions** are very good at carrying current, but it **takes them a split second to get going due to their weight. That split second is critical and it opens the door to free-energy.**

In that split second, the electrons pile up because they are still arriving down the wire at very high speed. **So, at Time "C" they have built up into a large body of electrons.**

This large body of electrons has **the same effect as if there had been a sudden connection to a much higher voltage source** capable of **supplying a much higher current.**

This situation **only lasts for a very short time**, but it has **three very important effects.**



- Firstly, at Time "D", it drives a much larger current into the battery than could reasonably be expected from the original voltage source.
- Secondly, this effect **alters the Zero-Point Energy field (the space-time continuum)** in which the circuit is located, **causing extra energy to flow into the circuit from the outside environment.** This is a bit like sunshine generating current flow in an electric solar panel, but **instead of visible sunshine, the energy flow is not visible to us.**
- Thirdly, the **excess energy** flows into the battery, **charging it much more than would be expected,** and **at the same time, some of the excess energy flows into the load, powering it as well.** The load could be a lamp, a motor, an inverter, a pump, a drill, or whatever.

**Conclusion : Excess energy is collected from the environment and used to both charge the battery and at the same time, perform useful work.**

The old saying "you can't have your cake and eat it" just does not hold in this situation as that is exactly what happens.

Instead of the battery being run down from powering the load, **the load gets powered and the battery gets charged up at the same time.**

This why, with this system, a discharged battery can be used to apparently run a motor. **It works because the plates in the discharged battery are made of lead which forms a bottleneck for the electron flow, causing the environment to charge the battery and run the load at the same time.**

That is why you get what looks like the magical effect of a discharged battery appearing to power a load. In passing, **the more discharged the battery, the faster it charges as the environment adjusts automatically to the situation and feeds greater power into a flat battery. The environment has unlimited power available for use.**

**John Bedini** who is expert in this field **has had motors running continuously for three or more years** with the battery never running down and the motor doing useful work all the time. Great battery?  
No, - great environment !!

For the vital build up of excess electrons to take place, **the switch closure has to be very sudden and very effective**. A **thyristor or "SCR" is suitable** for this as once it is started, it switches on rapidly and fully. Sound good so far?

This is only the start. I suggest that **the Tesla 4-battery switch circuit operated in the 100 Hz to 800 Hz region** operates in this way. This situation can be further enhanced by suddenly cutting off the electron flow from the original voltage source while the excess electron pile-up is still in place. This causes a sudden (very brief) further surge in the excess power, building up the voltage and current even further and increasing the battery charging and load powering drive.

**An even greater effect** can be had if the next, short, sharp pulse is applied to the battery/load combination, just **before the effect from the last pulse dies away**. I suggest that **this is the situation** which **the Electrodyne Corporation people encountered** when the **pulse rate went over the 800 Hz rate**. I suggest that it is not so much a case that the battery and load could not take the power, but more a case that the components which they were using were not rated high enough to carry that level of power.

They do mention that **if they went further**, that they found that **some of their circuit components started failing through** not having high enough ratings (notice that the output capacitors are rated at 100 volts which is eight times the nominal battery voltage). This was hardly a problem, considering that they had 12-volt batteries operating happily at 36-volts if they wanted that. **They ended up building circuitry to hold the voltages down to a convenient level**.

**To summarise the situation**. The Tesla 4-battery switch appears to do the impossible through:

1. Catching the current coming out of the load and using it to charge another battery instead of wasting it.
2. Providing very short, sharp, and rapid switching pulses which exploit the momentum of the lead-ions current flow.
3. Pulling extra energy in from the local environment to both charge the batteries and power the load at the same time This leaves aside the possibility of two further gains available through very precise timing of the switching pulses (mainly to make the power available more easily and cheaply handled).

So, it should be borne in mind that the **practical issues involved** in getting this circuit operating effectively **are primarily about very fast, clean and welltimed switching**. Stranded, high-current rated wire will be helpful in getting the draw of excess energy into the circuit.

**Tesla has used four diodes to simplify the switching and reduce it to two On/Off switches plus two changeover switches**. Alternatively, six On/Off switches can be used.

In the refered link :

[http://www.vems.hu/freenenergy/pajert62/Tesla\\_Battery\\_Switch\\_2.PGFED.pdf](http://www.vems.hu/freenenergy/pajert62/Tesla_Battery_Switch_2.PGFED.pdf)

You will find more details about a realized circuit is described.

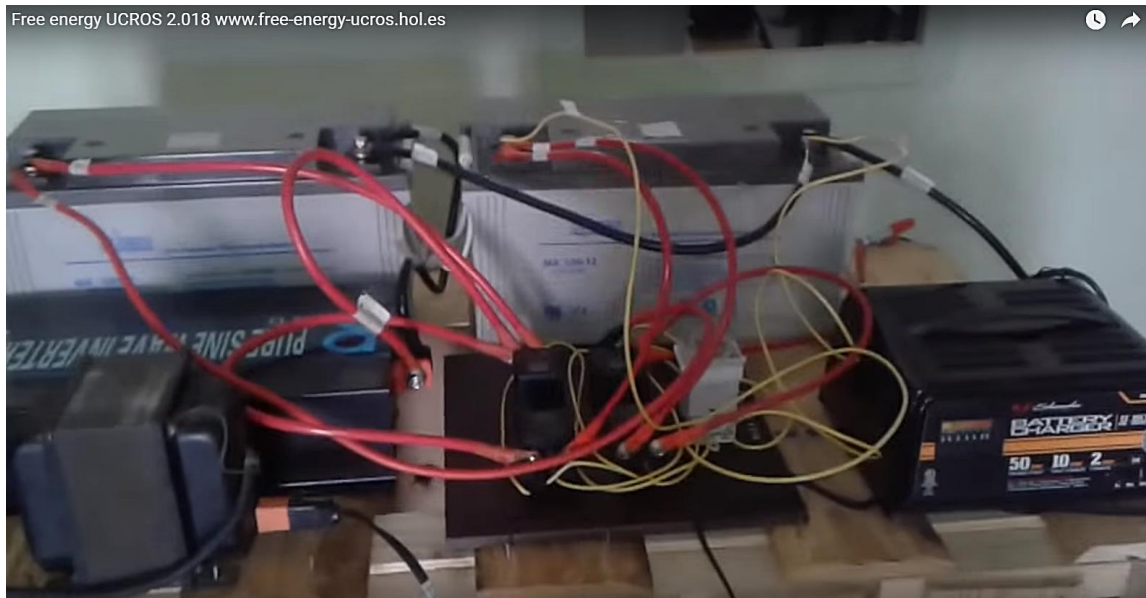
### 3. Carlos Ucrós Piedrahita : Free Energy Multiplier UCROS

Webpages :

<https://ucros-electrical-cycle.es.tl/Home-in-English.htm>

<https://kits-ucros.es.tl/Home---Inicio.htm> Ucrós Multiplier System

<https://www.youtube.com/watch?v=OUiKMm9IHCE>



1. Background. Two batteries 12 V 120 Ah
2. Middle left : Pure Sine Wave Inverter
3. Front left: Transformer
4. Front right: Schumacher Battery Charger 50 A, 12 V
5. Front middle : 4 disconnect relays with white timer box for battery switching

This system is build with only two batteries – not with 4 batteries as in the Tesla switch. This two batteries are switched all 5 minutes from the inverter to the charger.

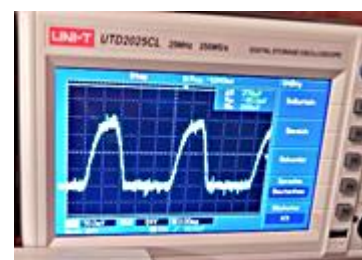
During the 5 minutes the modified charger, which **does load with current with superimposed rectangular pulses** in the range of 900 Hz, **is able to deliver 9 times or more the charge** which is taken at the same time from the other battery which feeds the DC/AC-inverter.

In the following 5 minutes the batteries are exchanged via timer controlled disconnect relays and the next charging occurs on the discharged battery.

See also : [www.borderlands.de/Links/Carlos-Solid-State-Update.pdf](http://www.borderlands.de/Links/Carlos-Solid-State-Update.pdf)

#### Remark :

As it can be seen in the circuit schematics of Carlos Ucrós Piedrahita he uses no special oscillatory circuit for the production of high frequency oscillations. But because **standard battery chargers** like the type ABSAAR 12 V 22A/180A **produce** itself **current pulses** (and no DC-current) - see example in the oscilloscope picture – it seems that **even such « slow » pulsing with moderate slopes can trigger special energy effects as described in part 1 and 2.**

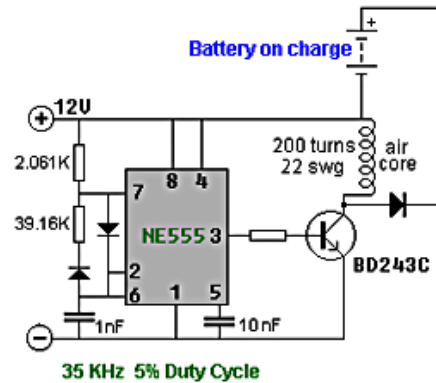


periode : 100 ms, current 45 A max.

#### 4. Panacea's Documentation about Matthew Jones Tesla Switch, engineer Gene, Tesla switch by mondrasek, a solid state version by Jetijs etc.

<http://www.panaceatech.org/Tesla%20Switch.pdf>

Here we reproduce only the introductory text of Peter Lindeman (we do know him personally):



The following overview has been provided by Peter Lindermann.

« The original circuit was developed by Ronald Brandt. The 1983 date of the Brandt circuit pre-dates John Bedini's work on this system. **Ron's circuits used mechanical (as opposed to solid state) contractors as switches**, but apparently worked quite well, as long as the contactors lasted.

**John was the first to adapt this circuit to solid-state switching**, using the SG 1524 dual flip-flop functions and bipolar transistors as the switches.

**John has told me that his "cigar box" unit ran a small electric motor for more than 6 months without discharging the batteries AT ALL.** He also told me that **the original working model was smashed by a "guest" in his shop** who was infuriated by its operation, while John was out of the room. **At this point, he decided not to rebuild it.**

I know John personally, and have no reason to doubt this report. Obviously, the voltage drops in the transistors and diodes present a **CONSTANT** loss during operation, not to mention the energy dissipated at the load. Therefore, **the system defies all standard explanations and energy use equations.** **The batteries apparently stay charged and run loads simultaneously for a reason that is not conventional.**

Since Ronald Brandt has run a car on this system, and John Bedini has run small motors on miniaturized version, it seems reasonable to assume it is worthy of more study by experimenters.

**It is recommended that you read a lengthy report; written by Eike Mueller, dated September 3, 1984 entitled "EXPERIMENTS WITH A KROMREY AND A BRANDT-TESLA CONVERTER BUILT BY JOHN BEDINI** (we have known Eike Mueller personally), see :

[http://www.tuks.nl/pdf/MUELLER\\_EXPERIMENTS\\_KROMREY\\_BRANDT\\_TESLA\\_BEDINI.pdf](http://www.tuks.nl/pdf/MUELLER_EXPERIMENTS_KROMREY_BRANDT_TESLA_BEDINI.pdf)

**With Comments by Tom Bearden 1984 33 pages.** Open source Rick Fredrick has this booklet available for sale on his web site. Or you can download this from the energetic forum. Technical discussion links and related links will be listed at the end of this course.

#### 5. Alexkor battery charging circuit

The Alexkor battery charging circuit is **very effective, cheap and easy to build.**

See : [www.borderlands.de/Links/Alexkor-Battery-Charging-System.pdf](http://www.borderlands.de/Links/Alexkor-Battery-Charging-System.pdf)

The Alexkor circuit allows to charge a battery **using twelve times less current than a conventional charger would.** The circuit can charge lithium, NiCad or lead-acid batteries.

## 6. Enlighted Technology

#BREJU – **Worlds most efficient battery Charger/Rejuvenator**

[https://web.archive.org/web/20160827183311/http://www.enlightenedtechnology.org/?page\\_id=1241](https://web.archive.org/web/20160827183311/http://www.enlightenedtechnology.org/?page_id=1241)

State of the art, High Tech, **very high efficiency**, Battery Charger/Quickener Rejuvenator. Fully versatile and **will charge almost any battery or battery pack**. Will charge many batteries at once. Will **charge very fast** compared to any other charger with the same amount of power input.

**Tested** as high as **1.86 COP (186% efficiency)** . Averages very close to 100% efficiency. For those who think over-unity is impossible, you need to research heat pumps. These average a COP of 1.5 and as high as self-running (infinity). **The extra energy comes from ambient.** ... sometimes Charging circuit tested as **high as 300% in some tests** (3x over unity).

All other chargers that we tested averaged less then 50% efficient (0.5 COP)

### Summary of COP-values with pulse charged batteries

0. **Carlos F. Benitez** – According to his patent GB121,561 he was able to fully charge a decharged battery bank in one ceratin time periode when an energy amount of 1/6 of the charged battery bank was used to recharge the decharged battery bank in the same time period. Therefore the **COP was 6 :1**.
1. **Ron Brandt/Bedini** converter + **Electrodyne** converter: **COP not known but** the systems have been in use with loads **running continously** for days, months and years. The estimated **COP was at least. 2 :1 or more**
2. **Tesla 4-battery system, Bedini 3-battery system, Ron Cole's 1-battery system**  
**No COP known**, but continously running confirmed.
3. **Carlos Ucrós Piedrahita : Free Energy Multiplier UCROS**  
Inventor claims to have reached a **COP of 9 :1** (905 to 10%)
4. **Panacea's Documentation about Matthew Jones Tesla Switch, engineer Gene, Tesla switch by mondrasek, a solid state version by Jetijs etc.**  
**No COP given** but **the batteries** apparently **stay charged and run loads simultaneously**
5. **Alexkor battery charging cicuit**  
**COP was 12 :1**
6. **Enlighthed Technology**  
**COP = 1,86 up to COP = 3 :1**

### Comments :

**A standard system** of batteries, inverters, chargers if driven continously in a closed circle without additional loads **would result in the decharging of the batteries after some time** because the total COP is much lower than 1. If you consider the losses in the inverter, the charger, the cablings and the batteries **you will get an overall efficiency of some 50% or a COP of 0,5 :1.**

**Only if you are using the special effect of pulse charging** – as explained in sections 1 to 6 and expecially in the theoreticl paper of Dr. Cyril Smith **you can get COP > 1 or CP >> 1.**

Already when you can realize a COP of 2 :1 you are 4 times better then in the case of charging with continous current. If e.g. weg et 5 kW on the inverter output we feed 2,5 kW back via loader tot he batteries and have 2,5 kW «free» to be used by the load.

But when we discuss a COP = 9 :1 as Carlos Ucrós has realized (according to this website) then we can deliver e.g. 4,44 kW to the load, 0,56 kW to the charger which is 1/9 of the of the total 5 kW which the inverter generates (which an efficiency of about 95%).

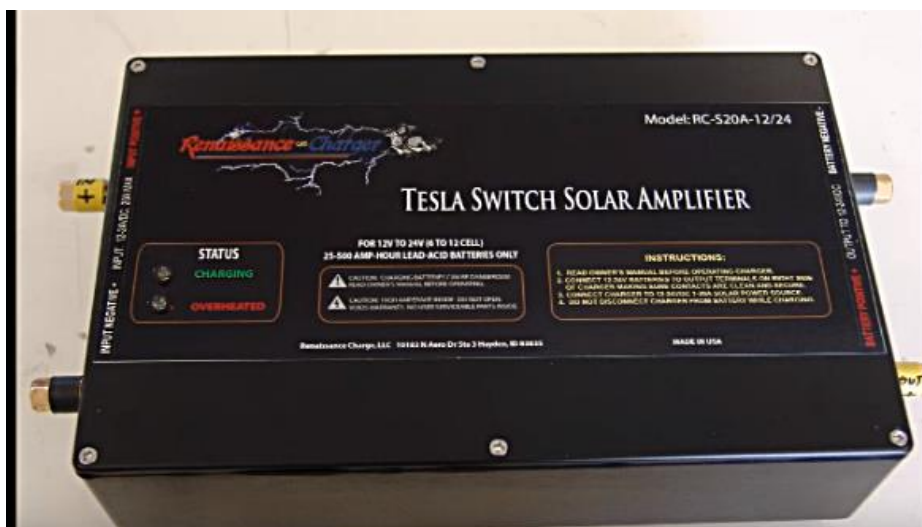
If the inverter consumes 4,8 kW at 12 V, this correponds to a current of 400 A. With a COP = 9 :1 it can be assumed that the charger produces also 400 A pulses but with a pulse-pause ratio of 1:9 at a frequency of some 900 Hz. This large amount of down-up slopes of the pulses generates a fast electron flow and helps to charge the battery much faster compared with DC-current. The net power needed of the charger on the primary site is  $4,8 \text{ kW} / 9 = 0,53 \text{ kW}$ . But the actual values may differ because we have also to consider the ohmic losses in different component and the wires.

## 7. Special considerations by Rick Friedrich to Tesla-Switch-Systems

As it is written in [https://www.youtube.com/watch?time\\_continue=12&v=q1FyajzU3So](https://www.youtube.com/watch?time_continue=12&v=q1FyajzU3So) Bedini himself has known that some circuit designs which are not recommended and can even ruin the batteries. This is also the case with the traditional Tesla Switch which Bedini has presented at the 1984 Tesla Symposium. According to Rick Friedrich it was Carlo Benitez who has developped 100 years ago the real (working) Tesla Switch.

In his video: [https://www.youtube.com/watch?time\\_continue=12&v=q1FyajzU3So](https://www.youtube.com/watch?time_continue=12&v=q1FyajzU3So) he emphasized several times that in fact the Bedini Tesla Switch caused a lot of problems (1:32). Lot of people wasted their time and money (1:42) and ruined their batteries (18:55). The type of Tesla Switch which Beini promoted actually destructed the batteries (2:25) as it did the Watson machine (22:54). The principal of the Tesla Switch (or Brandt) with two batteries in series and two in parallel war not invented by Bedini but 100 years before by Carlos F. Benitez (5:47). Carlos switched the batteries very slowly (7:53).

Also the **Bedini Tesla Switch Solar Amplifier** had some serious failures (27:19). **The switching was to fast and stressed the batteries.**







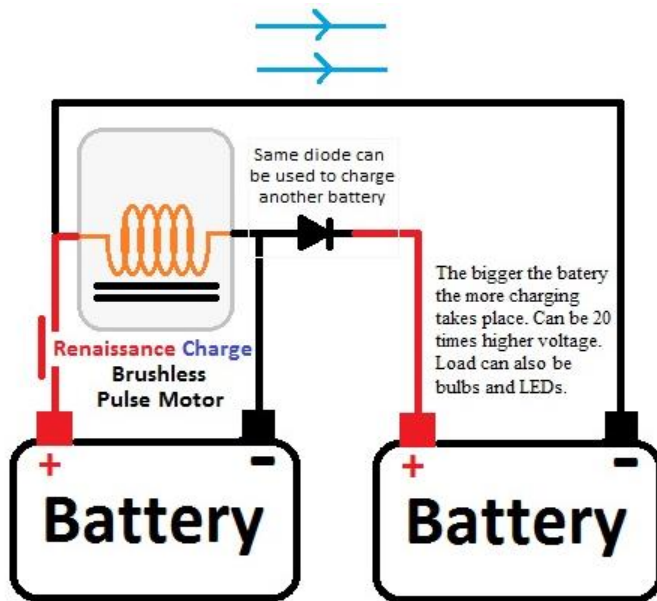
When you are switching to fast from the charging to the loading process the metal in the batteries is to much stressed (32:01).

## 8. Simplified battery charging circuits

Rick Friedrich has published some papers where he has shown that even with a few electronic components it is possible to stimulate the special "super-"charging behaviour of batteries.

In his elaboration : [http://www.r-charge.net/Free-Energy\\_ep\\_56.html](http://www.r-charge.net/Free-Energy_ep_56.html) he describes under the title «Selfish Unthankful Circuits or Loving Giving Paths. The Road to True Liberty» - see also the video: <https://youtu.be/SE-AiC9yiFc> from Febr. 17, 2016, - that he has succeeded to present his final work on the subject of Free Energy and which may be part of a chapter in an upcoming book ... This is an attempt to show the world in the simplest way how to have all the power they need in 4 different steps.

## Open looping and transferring duplicate energy to another load beyond itself

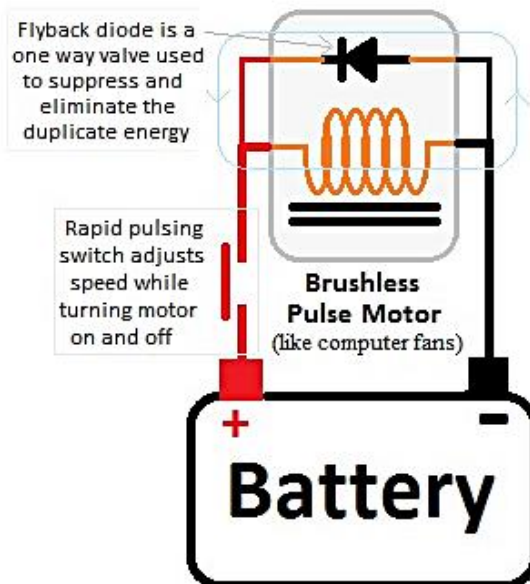


### Open loop transfer of energy

This circuit shows how the energy in the left battery can be mirrored in the right battery like an echo in the impulse. Evidently the energy stored in the left battery is not wasted but given away to another. It is also possible to feed additional energy from the right battery to a load.

The key element is an inductivity which is switched fast enough on and off and generates high voltage spikes and currents which are fed via a diode to the positive pole of second serially coupled battery.

## Close looping the duplicate energy back upon itself



### Closed loop transfer of energy

This circuit shows how the energy in a battery can be fed back upon itself like an echo in the impulse. Evidently the energy stored in the battery is not wasted but continuously regenerated. This is also the case when a load is connected to the battery.

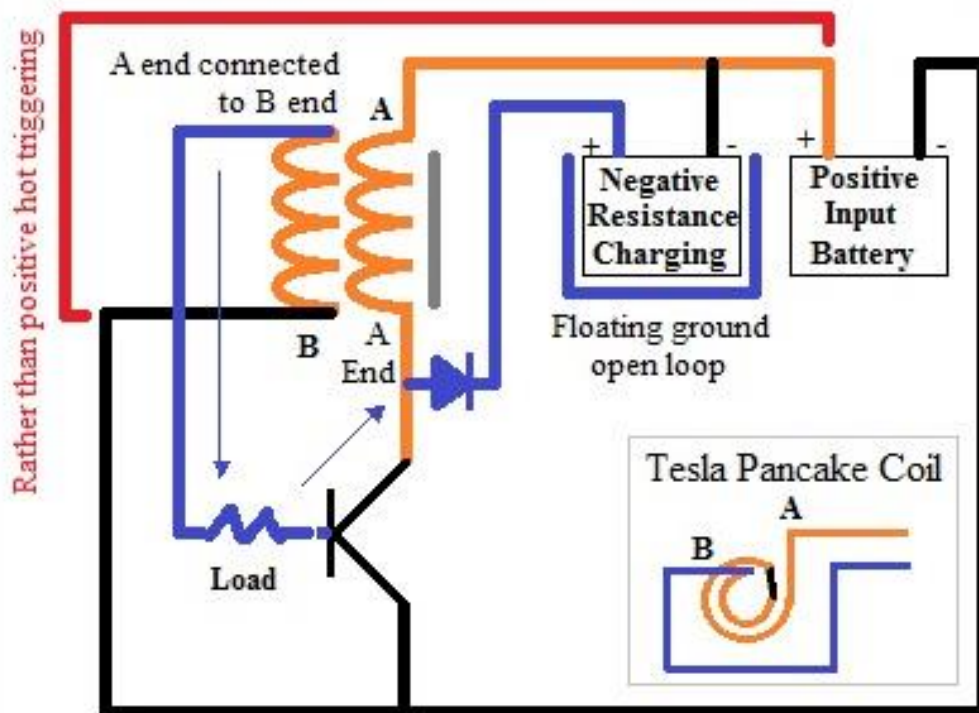
The key element is an inductivity which is switched fast enough on and off and generates high voltage spikes and currents which are fed via a diode to the positive pole of the battery.

Rick Friedrich recommended to use Tesla Coils in a simple electronic circuit to create a kind of «negative resistance» which is basically an energy source which can charge a battery, see: <http://potentialtec.com/>

## Bifilar Tesla Coil Oscil. Negative Resistance Output

Bifilar as motor coil with a trigger oscillator coil with output (B) going to the negative rather than back up to the positive (A) makes Tesla Coil with the following benefits: (Patent 512,340)

"If now a conductor B be wound parallel with the conductor A and insulated from it, and the end of A be connected with the starting point of B, the aggregate length of the two conductor being such that the assumed number of convolutions or turns is the same, vis, one thousand, then the potential difference between any two adjacent points in A and B will be fifty volts, and as the capacity effect is proportionate to the square of this difference, the energy stored in the coil as a whole will now be two hundred and fifty thousand as great."



Rick Friedrich Feb 2017

## 9. Patents on «Fast battery charging circuits»

In the patent directory [www.espacenet.com](http://www.espacenet.com) you can find a lot of patent applications concerning methods to charge batteries in shorter time and more efficiently. But usually there is no reference that the needed amount of charge (electrical energy) is lower compared with the final charge stored in the battery.

It can be assumed that all this kind of inventions are focussed to the topic of fast and efficient charging and not the possible energy saving. Therefore it is not supposed that the inventors have tested if there is any remarkable difference between the energy fed into the battery during the charging process and the total energy amount which can be delivered from the battery when the charging is finished. Even if such phenomena would have occurred it would not be possible or recommended that the inventor refers to such effects in his patent description + in the claims. The reason is that there is still now no accepted theory which could explain how such a breach of energy conservation could occur.

But if we consider the different circuits and experiences of trained engineers resp. inventors like Bedini et.al. as documented in this paper it is evident that some additional energy is flowing into some circuits resp. batteries from the environment resp. the quantum field or zero point field. As explained later it can be assumed that we need some new sophisticated theories for explaining this kind of phenomena.

**Sample of patents with pulsed battery circuits are collected here :**

[www.borderlands.de/Links/Pulse\\_charging\\_batteries\\_patents.pdf](http://www.borderlands.de/Links/Pulse_charging_batteries_patents.pdf)

## 10. Patrick J. Kelly's Chapter 6 : Puls Charging Battery Systems

...

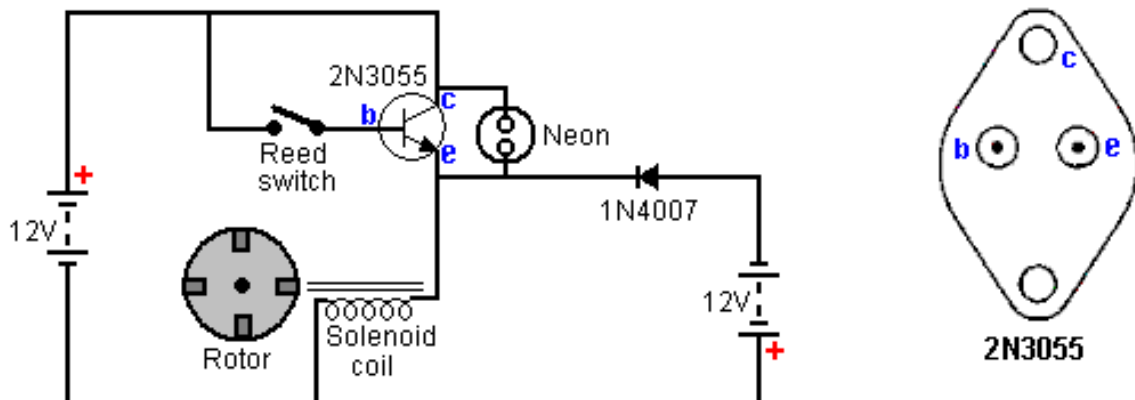
### **Example : Ossie Callanan's Free-Energy System**

In 2007, Ossie Callanan published a document showing how and why he was getting COP>1 battery charging. Ron Pugh's system kindly shared in detail above, with careful tuning and running on 24 volt input and 24 volt output **operates at COP>10** which is likely to be due to Ron's skill in building and adjusting, both of which are very good indeed, coupled with the use of many transistors working in parallel and tripled charging diodes to improve their performance...

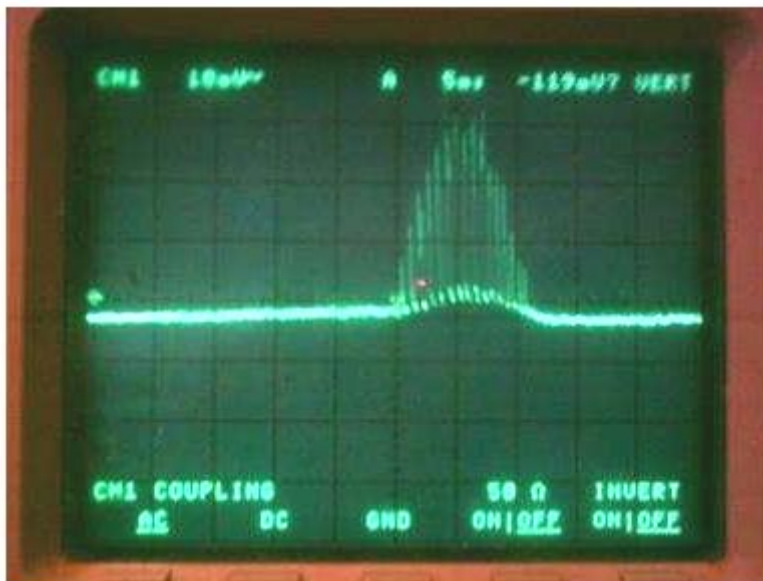
...Radiant energy pulses are Back-EMF pulses provided that they have very fast rising edges and falling edges and occur at high frequencies. They are not transistor transients or switching transients! A spark-gap produces classical radiant energy pulses. They are chaotic events but they are radiant energy events nevertheless. Switching a coil on very rapidly using a transistor will produce one radiant energy pulse from the coil's Back-EMF, but one pulse on its own is no good. **You need thousands or better still, millions of those pulses for them to be of any practical use..**

## Basic Radiant Pulse Oscillator / Motor-Driver Circuit

By Ossie Callanan



**Hinweis AS:** Statt eines mechanischen von Magneten auf einem Rad gesteuerten Reed-Kontaktes kann dieser auch durch das Signal einer PWM-Schaltkreises ersetzt werden!



### Aber Achtung:

Hier sieht man Mehrfach-Oszillationen, die durch den Reed-Switch verursacht werden, der mehrfach öffnet und schliesst.

Der Transistor kann natürlich auch durch eine PWM-Schaltung angesteuert werden, wobei dann der positive öffnende Puls noch einen interen Takt von 10..20 Pulsen enthalten sollte.

Dazu heisst es:

...So when the magnet passes the reed oscillates with the coil's field and causes very many pulses, typically 20 to 50 pulses per magnet pass. Amazingly, unlike the clamping diodes in the SSG, this is not wasteful. This reed switch oscillation actually reduces the input current. Instead of the reed remaining closed for the whole of the pulse duration, it switches on and off and so, less input power is drawn from the driving battery....

## 11. Links to theoretical considerations of the battery switching :

Tom Bearden :

- <http://www.cheniere.org/misc/battery%20poppers.htm>
- <http://www.cheniere.org/misc/oulist.htm>
- <http://www.cheniere.org/>
- <http://jnaudin.free.fr/html/tbfrenrg.htm>
- <https://www.amazon.com/Free-Energy-Generation-Circuits-Schematics-Bedini-Bearden/dp/0972514686>

Matthews Jones Jibbguy

- <http://www.panaceatech.org/Tesla%20Switch.pdf>

Lawrence Tseung : Cosmic Energy Machines, see :

- <https://de.scribd.com/document/249311637/Cosmic-Energy-Machines-Lawrence-Tseung-pdf>

Dave Michael Rogers:

Plant Cell Observations. Speculative theory for Negative Resistance formation. see :

[http://www.tuks.nl/pdf/Reference\\_Material/TeslaSwitch/Use\\_Tesla\\_sw\\_att/4217d1259618398-use-tesla-switch-otg-experimental-plante-cell-observations2-dmr08.pdf](http://www.tuks.nl/pdf/Reference_Material/TeslaSwitch/Use_Tesla_sw_att/4217d1259618398-use-tesla-switch-otg-experimental-plante-cell-observations2-dmr08.pdf)

It is my theory that the **formation of Lead Tetroxide**, a very strong oxidising agent, on the Anode of the battery, **creates** effectively a **negative resistance at the: Pb(s) || Pb3O4 boundary of the cell.**

But nothing can be concluded here. I am speculating as to what might be happening and without experimental proof, it will remain speculation. **The electro-chemical processes** in a lead acid battery **are so complex** that trying to find a definitive explanation is extremely difficult. **The internal currents** of the battery, especially those of the Lead and Hydrogen ions **are extremely important**, but there is little written about them.

See also :

[http://www.tuks.nl/pdf/Reference\\_Material/TeslaSwitch/Use\\_Tesla\\_sw\\_att/4216d1259618371-use-tesla-switch-otg-plante-cell-observations-dmr07.pdf](http://www.tuks.nl/pdf/Reference_Material/TeslaSwitch/Use_Tesla_sw_att/4216d1259618371-use-tesla-switch-otg-plante-cell-observations-dmr07.pdf)

**Cyril Smith** : On Pulse Charging of Lead-Acid Batteries Nov. 2010

[www.borderlands.de/Links/On\\_Pulse\\_Charging\\_of\\_Lead\\_Acid\\_Batteries.pdf](http://www.borderlands.de/Links/On_Pulse_Charging_of_Lead_Acid_Batteries.pdf)

... There exists the **possibility of overunity charging** of the lead-acid battery by having charging pulses that exhibit a fast rise time and an optimum pulse width. Current flows into the battery during the voltage rise to charge the inter-electrode capacitance, that time being too short for any chemical reactions to take place. That value of stored electronic charge is then converted into chemical energy and the pulse is slowly terminated during this process. **The stored chemical energy appears to be greater than the electrical energy supplied.** It is recommended that this possibility be researched.

**Additional Informations to John Bedini** (added on Jan. 15, 2017)

In 1985, radio talk show master Bill Jenkins of KABC, a Californian radio station, used his guest speaker seat at a public forum on March 12 at the Biltmore Hotel in Los Angeles to announce a FE device with John Bedini and Steve Werth ... According to one Magazine news also included repre-

sentatives of local energy suppliers and investors. The then 37-year-old **Bedini** told the forum **that he would like to make his generator available to people everywhere at a symbolic price** instead of selling it to the highest bidder. According to his description, **his model worked with high-energy, pulsed, phase-shifted scalar waves to pull the zero-point energy out of the vacuum**. The concept is not in the common textbooks on physics, but **it is an absolutely natural concept and actually works**, he said.

**A few weeks later Bedini received a visit from two thugs who** were definitely opposed to his efforts to disconnect from the existing power structure. They **looked like bodybuilders** just leaving the gym, **pushing him against the wall** of his shop, **threatening him to understand that they expected him to continue using gas**. Bedini laughs briefly as he remembers, but obviously he knew they were serious. Now that he lives in Idaho, **he believes that the reason that "the" no longer threaten him is that he only builds his toys in toy size**. His model collection demonstrates only one principle - which he believes could supply a whole house with electricity if the models were built in the appropriate size. This principle involves the storage of short energy discharge pulses that arise when performing work with previously stored energy. The sequence is "do work, unload, do work, unload", etc.

Last year John Bedini passed away, see: [http://www.borderlands.de/net\\_pdf/NET0117S30-33.pdf](http://www.borderlands.de/net_pdf/NET0117S30-33.pdf)

## Comparison of fast charging and pulse charging (Dissertation)

[www.borderlands.de/Links/Batterie-Schnell-und-Pulsladen.pdf](http://www.borderlands.de/Links/Batterie-Schnell-und-Pulsladen.pdf)

Die Schnellladung von Bleibatterien ist vor allem für den Einsatz in Elektrofahrzeugen ein wichtiges Mittel, um die tägliche Reichweite zu erhöhen. Vor allem bei der Schnellladung tritt die Nebenreaktion der Wasserzersetzung in der Bleibatterie gegenüber der Ladereaktion mehr und mehr in den Vordergrund.. In dieser Arbeit wurde daher daran gearbeitet, durch gezielte Beeinflussung der Reaktionskinetik durch Puls-ladeverfahren das Gleichgewicht zwischen Lade- und Gasungsreaktion zur Ladereaktion hin zu verschieben. Über Modellrechnungen wurde gezeigt, daß die Pulsladung dazu ein geeignetes Instrument darstellt...

Fast charging of lead-acid batteries is an important means of increasing the daily range, especially for use in electric vehicles. Especially in the case of rapid charging, the secondary reaction of the water decomposition in the lead battery is increasingly coming to the fore against the charging reaction. In this work, therefore, the equilibrium between charging and gassing reaction towards the charging reaction was worked out by deliberately influencing the reaction kinetics by pulsed charging move. Model calculations have shown that the pulse charge is a suitable instrument for this ...

## Battery Pulser with Overvoltage for Desulfating

[http://www.borderlands.de/Links/Batterie-Pulser\\_mit\\_Ueberspannung.pdf](http://www.borderlands.de/Links/Batterie-Pulser_mit_Ueberspannung.pdf)

## More general theoretical considerations:

**Prof. Dr. Claus Turtur**

[https://www2.ostfalia.de/export/sites/default/de/pws/turtur/FundE/English/energydensity\\_e.pdf](https://www2.ostfalia.de/export/sites/default/de/pws/turtur/FundE/English/energydensity_e.pdf)

**Adolf Schneider**, compilation to « Energy Extraction from the Vacuum Field»

- <http://www.borderlands.de/Links/SPEEVF.pdf>

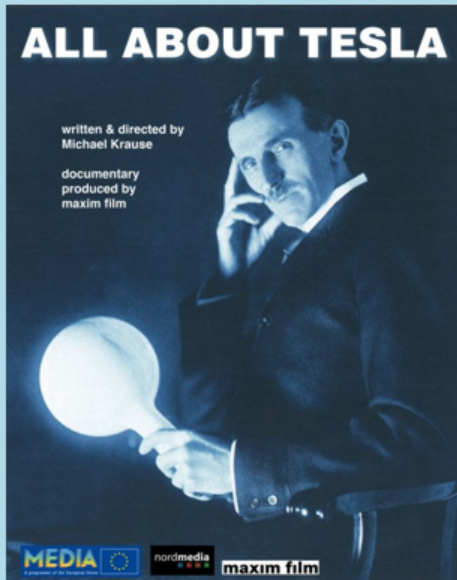
**Dr. Frank Lichtenberg**, compilation to

«Entirely novel and environmentally friendly energy technologies Papers and concepts»

- <https://novam-research.com/energy1.php>

# Historical Reports

Nikola Tesla reported 1931, that he has realized a drive system which uses a new kind of energy taken directly from space.



On July 10th, 1932, Tesla announced in *The Brooklyn Eagle* „I have harnessed the cosmic rays and caused them to operate a motive device."

In 1933, he made the same assertion for the *New York American*, November 1<sup>st</sup>: **This new power** for the driving of the world's machinery will be **derived from** the energy which operates the universe, the **cosmic energy** ... which is **everywhere present in unlimited quantities**.

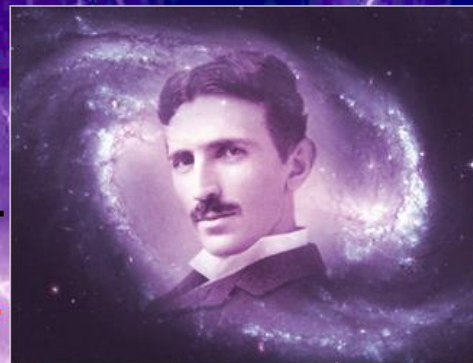
# Novel Energies

This **new power** for the driving of the world's machinery **will be derived from the** energy which operated the universe, the **cosmic energy**, whose central source for the earth is the sun and which is even **present in unlimited quantities**.

New York American, 1.11.1933

**I have harnessed the cosmic rays and caused them to operate a motive device.**

[www.borderlands.de/Links/NovelEnergyTechnologies.pdf](http://www.borderlands.de/Links/NovelEnergyTechnologies.pdf)  
[www.borderlands.de/Links/WCEC031116.pdf](http://www.borderlands.de/Links/WCEC031116.pdf)



Nikola Tesla (1856-1943)

***The Brooklyn Eagle,***  
**July 10th, 1932,**



# Conversion of Space Energy



- It can be summarized that in mainstream and alternative physics are new concepts which explain the continuous energy flow from and to the vacuum energy field.
- Space energy can be tapped and converted in conventional energy via dynamic resonant fields in linearly oscillating and rotary devices.
- Bestselling author and covered speaker, Gerald Celente stated some years ago: "We need a productive capacity - and the best way that we see it is with alternative energy – not wind, solar, geothermal, biofuel - but something much bigger".

